



AD-SS

Automatic liquid drain AD-SS

Separator and automatic liquid drain ADS-SS

- Save condensate removal and separation
- Completely made of stainless steel
- For high pressure and temperature applications
- High drain capacity

Application

The **M&C** liquid drain **AD-SS** is used in gas conditioning systems where condensate must be drained after cooling the gas.

For condensate pre-separation of saturated gas with simultaneous drainage, **ADS-SS** separators and automatic liquid drains are provided with a lateral gas connection for additional separator functions. For functioning of the above mentioned drains overpressure is required.

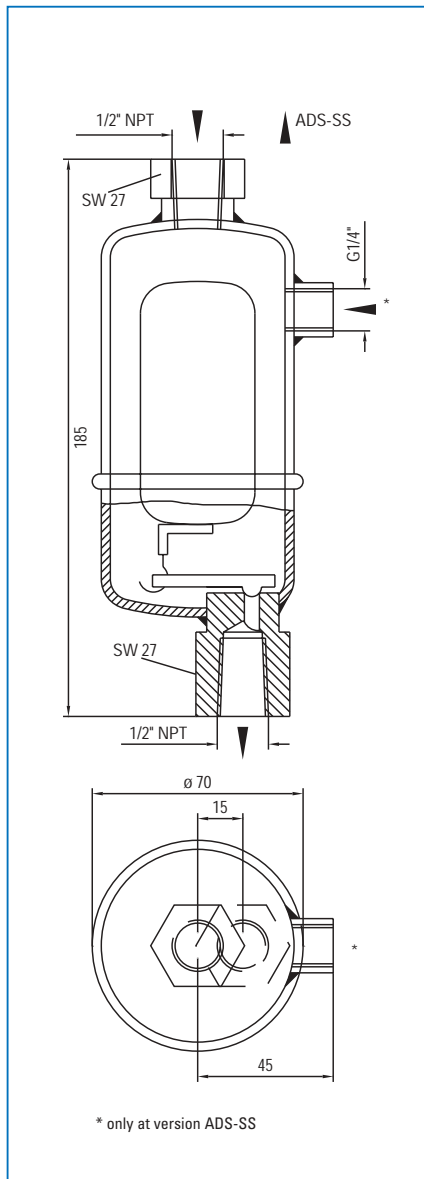
Description

The **AD-SS** and **ADS-SS** automatic liquid drains function via gravity. The casing, float, valve and valve seat are made of stainless steel. The outlet valve is controlled by a lever mechanism. The float closes the condensate outlet via the lever mechanism with the valve tip. Due to the rising condensate level the outlet is released by the buoyancy of the float.

The **ADS-SS** separator with automatic condensate drain is a modification with an additional lateral gas connection.

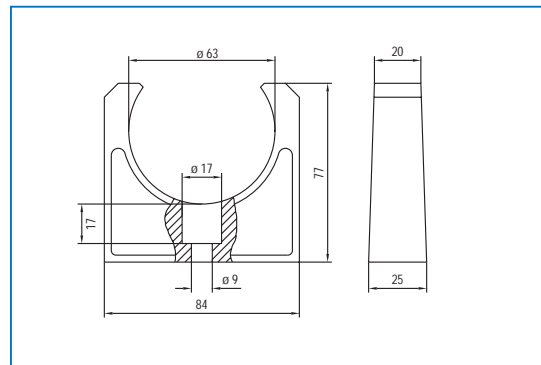
Dimensions

Separator and automatic liquid drain AD-SS and ADS-SS

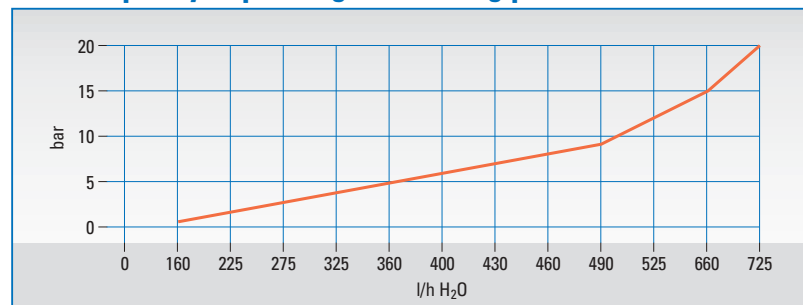


Dimensions in mm

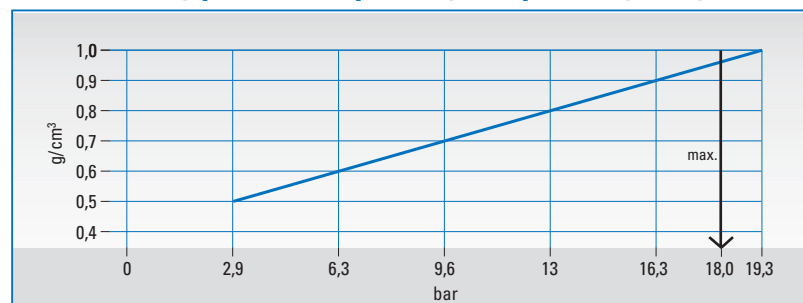
Mounting clip AD-SS for wall mounting



Drain capacity depending on working pressure



Max. working pressure depending on specific gravity



Technical Data

Liquid drain	AD-SS	ADS-SS	Mounting clip
Part number	09K3000	09K8000	90K3010
Material	stainless steel 304, 316		PE
Operating temperature	0 to +200 °C		-20 to +90 °C
Storage temperature	-50 to +200 °C		-30 to +110 °C
Operating pressure	1-19 bar abs.		
Function	specific gravity min. 0,5 kg/dm ³ , at 1 bar abs.		
Capacity	160 l/hr H ₂ O, at 1 bar abs. and 20 °C		
Mounting position	vertical		
Condensate in	1/2" NPT i		
Condensate out	1/2" NPT i		
Sample gas in		G1/4" i	
Sample gas out		1/2" NPT i	
Weight	0,8 kg		0,05 kg