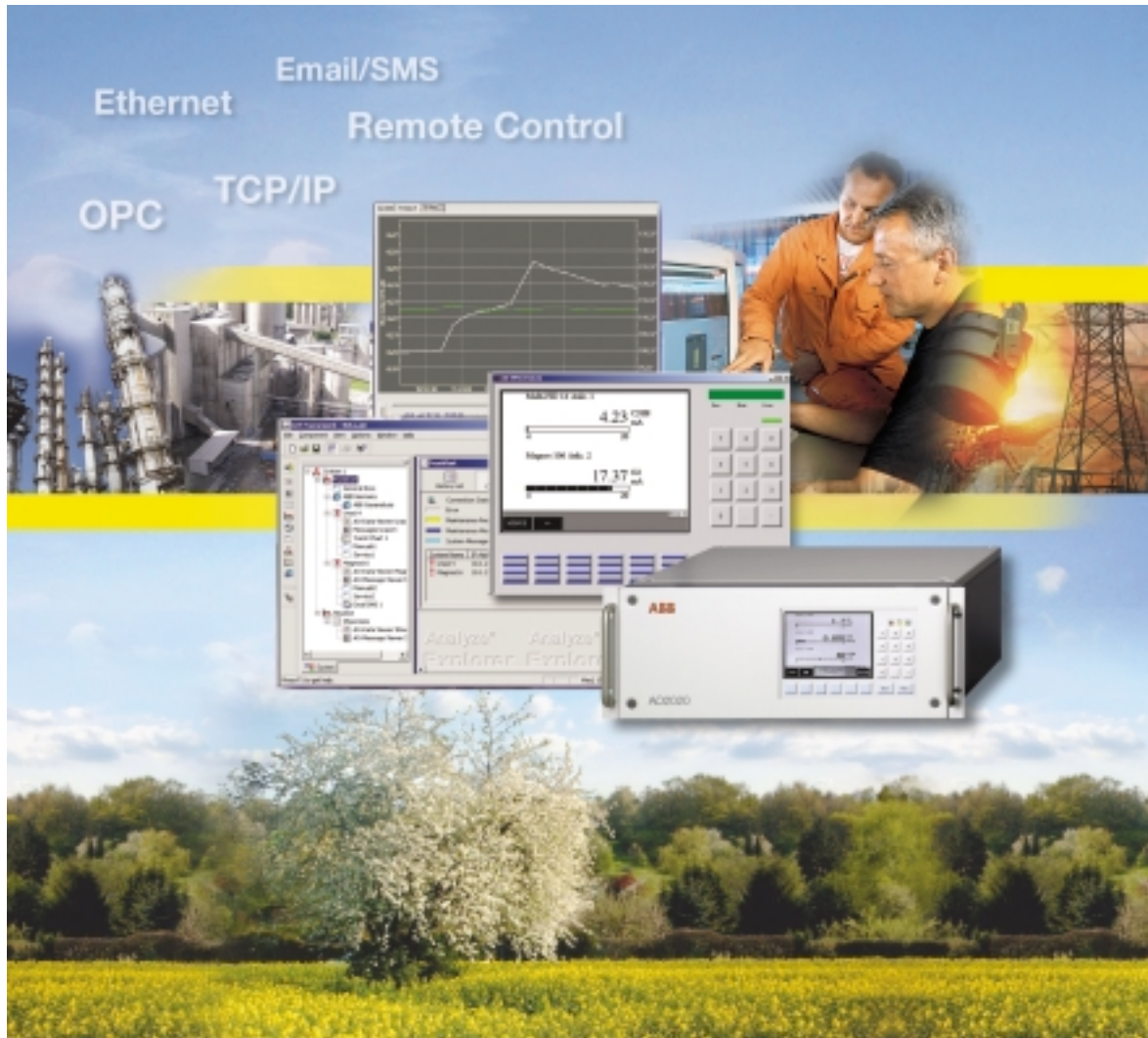


Analyze^{IT} Explorer

Asset Management for Analytical Systems



Facility Wide Asset Management for Your Analytical Systems

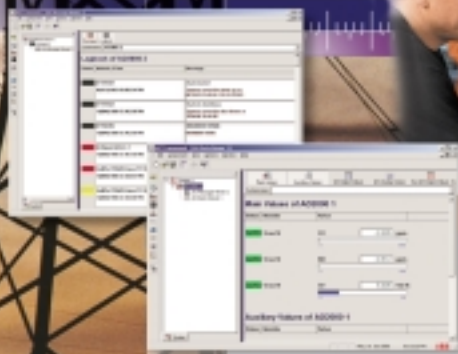


Is the availability of your analytical equipment and systems a major priority – and do you want them to have centralized, facility wide maintenance?

Then we have exactly the right solution for you: **Analyze^{IT} Explorer.**

Your advantages:

- Centralized maintenance – through an Ethernet-network linking all ABB analytical equipment and systems, worldwide
- Lower costs – through predictable, scheduled servicing
- Improved process availability – through minimized downtimes



AO2000 Series
Advance Optima
GC PGC2000
FTIR FTPA 2000 Series

Analyze^{IT} Explorer provides the overview

The Analyze^{IT} Explorer gives you centralized access to all relevant analytical data, such as the status of your analyzers as well as error and maintenance messages covering your entire analytical network.

By having direct access to your network's equipment, most servicing can even be done by remote control over the Ethernet. And with the appropriate network configuration, that servicing can now be done worldwide as well as facility-wide over an intranet interface. Maintenance can therefore be better planned and more effective. Trouble shooting and testing can be done faster. And on-site service calls can be significantly reduced. Aside from cutting your costs, that also means your system's availability can be increased, significantly.

These advantages are not only designed to work with ABB analyzers, because the Analyze^{IT} Explorer also integrates other external processing signals via a OPC interface and makes them all available to you.

And for continuous gas analyzers, our comprehensive remote controls ensure safer, more reliable operations. As part of your maintenance contract, ABB service uses advanced remote diagnosis techniques to quickly identify and solve potential problems, fast. And if an on-site service call is required, the Analyze^{IT} Explorer helps to plan it efficiently.

Thanks to its advanced technologies and realtime data processing, the Analyze^{IT} Explorer increases the transparency of your analytical systems which also leads to greater operating efficiency.

Everything you need for optimal centralized maintenance

The Analyze^{IT} Explorer is similar to Windows Explorer programs, both in appearance and operation. All analytical components are displayed by a system diagram, which allows the status of even complex installations to be checked at a glance.

Analyzer data is clearly displayed and by activating the online trend recorder, selected data cycles can be portrayed in a graphic covering various time periods, which can then be stored on a computer's hard drive.

The Analyze^{IT} Explorer in overview

- Comprehensive monitoring from one or several workstations
- User-friendly operation and navigation
- Analyzer data displays
- Display and archiving of selected measurement trends
- Display of error and maintenance messages, also transmittable as SMS or e-Mail
- Integrated electronic documentation
- Integrated Internet Browser
- Licensing management
- User and security management



With this kind of project oriented analysis, engineering becomes more efficient by taking advantage of a reference library containing: recorded trends, project data, documentation or templates.

The Analyze^{IT} Explorer alarm system generates an extensive range of error and maintenance messages and sends them to the controlling PC. If desired, these reports can even be transmitted as an E-Mail or SMS (Short Message Service) to a service team's mobile phone. And you can even select different languages for these text messages. Per mouse click, digitized technical information for your analytical equipment is also available, including: operating or service manuals, gas flow diagrams or spare parts listings.

An integrated Internet browser even provides links to selected websites, e.g. to ABB product sites. The software structure allows new functions or updates to be integrated at any time. And the Analyze^{IT} Explorer is already configured for use with gas chromatographs and FTIR spectrometers.

Integrated licensing management ensures you of flexible licensing agreements, for either point-to-point connections or complex network installations.

System Requirements

Ethernet

ABB analytical equipment must be connected to Standard Ethernet networks using their existing Ethernet-ports.

Computer Hardware

- Monitor with a minimum resolution of 1024 x 768 pixels and 256 colors (16 bit color monitor recommended)
- 100 MB of hard drive storage, 64 MB of working memory (256 MB recommended)
- Ethernet network card (two, for back-up operations)

Operating System

- Windows NT 4.0 with SP6 or higher, Windows 2000 or Windows XP



Analyzer technology is our strength

ABB is one of the leading international companies in the field of analyzer technology. Thanks to decades of experience, we can develop innovative instruments and systems to meet your company's individual requirements.

And with a distribution network covering over 40 countries, ABB's know-how is available to you – worldwide.

Naturally, after any purchase after-sales services are just as important to you, as they are to us. That's why we offer you a broad spectrum of specialized services, such as: continuous maintenance, analyzer system modifications and troubleshooting etc. We'll be pleased to put together an individual service package for you.

ABB is your partner: From consulting to project planning, from system-installation to after-sales service.



Tradition and innovation

More than 75 years of experience in the development and production of analyzers as well as regular contacts with our customers are the basis for our innovative solutions, which have always been the market leader. Under the brand name "Hartmann & Braun", our products for the continuous measurement of processing gases have gained an outstanding international reputation and represent the leading edge of technology. Since then, analyzers with the names Uras, Limas, Caldos and Magnos have enjoyed worldwide acclaim and stand for the highest efficiency. Today, more than 30,000 of these analyzers have been installed throughout the world - in almost every industry.

ABB continuously optimizes its products, therefore the technical data in this document is subject to change.

Printed in the Fed. Rep. of Germany (04.2005)

© ABB 2005



ABB Automation GmbH

Analytical
Stierstädter Str. 5
60488 Frankfurt
GERMANY
e-mail: analytical-mkt.deapr@de.abb.com
www.abb.com/analytical