



Burner air conditioning series BA

Version BA, BA-P4

- **High degree of purity:**
 $C_n H_m < 10 \text{ppb}$,
 $H_2O \text{ dew point} < -10 \text{ }^\circ\text{C}$
- **Easy filter and adsorber change at the front without tools**
- **Long service life**
- **Minimum operating costs**
- **Status self-monitoring**
- **Compact, easy-to-use and easy-to-service 19 inch plug-in housing**

Application

When measuring hydrocarbons with a FID, hydrocarbon free burner air is necessary. The M&C-burner air BA conditioning has been developed in order to achieve proper burner air supply, independent of gas cylinders.

The BA unit can also be used as a zero gas generator when calibrating I.R.-analyzers for immission monitoring.

Description

The M&C-burner air conditioning versions BA and BA-P4 have been designed as compact, easy-to-use and easy-to-service 19 inch modules.

The M&C burner air conditioning version BA is designed without pump.

With version BA-P4 ambient air is taken in by means of the integrated pendulum reciprocating pump via the rear-mounted air suction filter and is directed to particle and condensate separation by means of a high-performance filter (0.01 micron of filter fineness) with an integrated, floating condensate drainer.

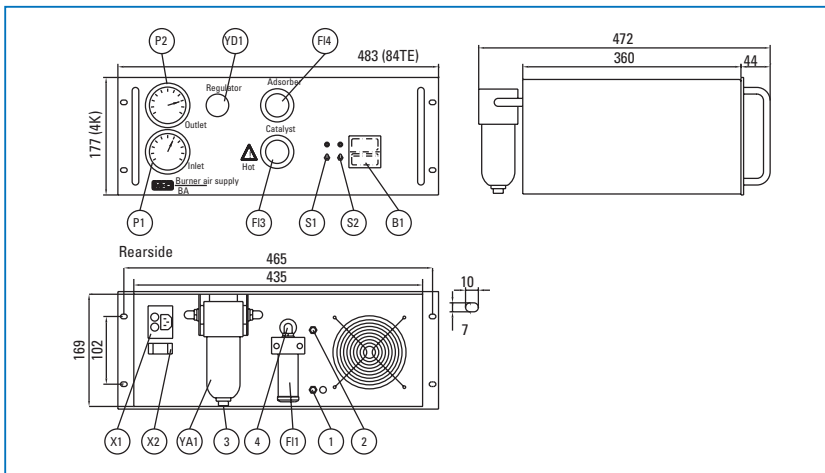
Drying the condensate-free compressed air to $< -10 \text{ }^\circ\text{C}$ dew point takes place in a membrane dryer.

There upon the compressed air is cleaned as a result of catalytic oxidation at $500 \text{ }^\circ\text{C}$ by means of a platinum/palladium catalyst of hydrocarbon traces.

A downstream adsorber cartridge with molecular sieve and activated carbon guarantees optimum purity of burner air.

The catalyst and adsorber material can, if required, be replaced at the front without tools.

Dimensions

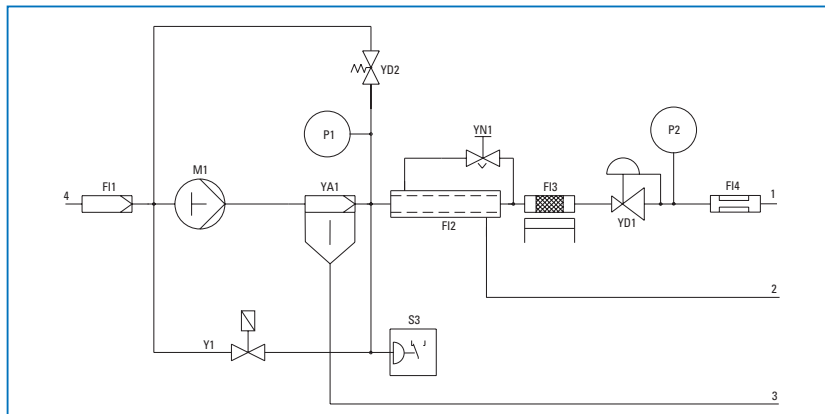


Dimensions in mm

- X1 Power supply
- X2 Status contact
- 1 Burner air outlet
- 2 Vent
- 3 Condensate outlet
- 4 Air inlet for BA compressed air IN
- B1 Temperature controller
- FI1 Air inlet filter
- FI2 Membrane dryer
- FI3 Catalyst
- FI4 Adsorber
- M1 Compressor for BA solenoid valve
- P1 Inlet pressure gauge
- P2 Outlet pressure gauge
- S1 Pump ON switch for BA solenoid valve ON

- S2 Power ON switch
- S3 Pressure switch
- Y1 Solenoid valve
- YA1 Condensate drainer
- YD1 Pressure regulator
- YD2 Check valve
- YN1 Needle valve

Functional diagram BA-P4



Technical Data

Burner air conditioning series BA	version BA	version BA-P4
Part No.	60A2000	60A2200
Inlet pressure	compressed air, 4-5,8 bar	internal pump
Outlet pressure / Burner air flow	0-4 bar adjustable/max. 3 NI/min	
Ambient temperature	+5 °C to +40 °C	
Start up time	approx. 45 min.	
Catalyst temperature	500 °C	
Burner air purity	<10 ppb Cn Hm, H ₂ O-dew point <-10 °C	
Catalyst poisons	Halogens, silicon, lead, materials containing phosphorous	
Storage temperature	-25 °C to +65 °C	
Relative humidity	<75 %, avoid condensation	
Inlet gas connection	compressed air in G1/4"i	air suction filter
Outlet gas connections	Hose connection DN 4/6 mm* Standard	
Condensate connection	G1/8 i DIN ISO 228/1	
Power supply	230V 50Hz 480VA	230V 50Hz 560VA
Electrical connections	Plug with 2 m cable for power in 9-pin sub-D connector for status contact	
Status signal contact for pressure and temperature	1 changeover contact - potential free, contact rating 24V, 1A	
Case protection	IP 20 EN60529	
Housing dimensions / protection	19" plug-in unit 4U, 84HP, depth 430 mm / IP 20 EN60529	
Weight	approx. 14,5 kg	approx. 16 kg
Electrical equipment standard	EN 61010	