



RV 11-..

## Needle valve Series RV 11- .. with locking and precise-adjusting function

- Corrosion resistant
- Compact design
- Gas tight
- Maintenance free
- Easy to operate
- Easy mounting

### Application

It must be possible to adjust precisely gas flow-through quantities in an analysis system depending on the application-specific requirements. Using the compact **M&C RV 11-..** precise-adjusting needle valves, this is possible, both reliably and exactly thanks to the optimum design of the valve control system. The use of corrosion-proof materials also guarantees analytical neutrality.

### Description

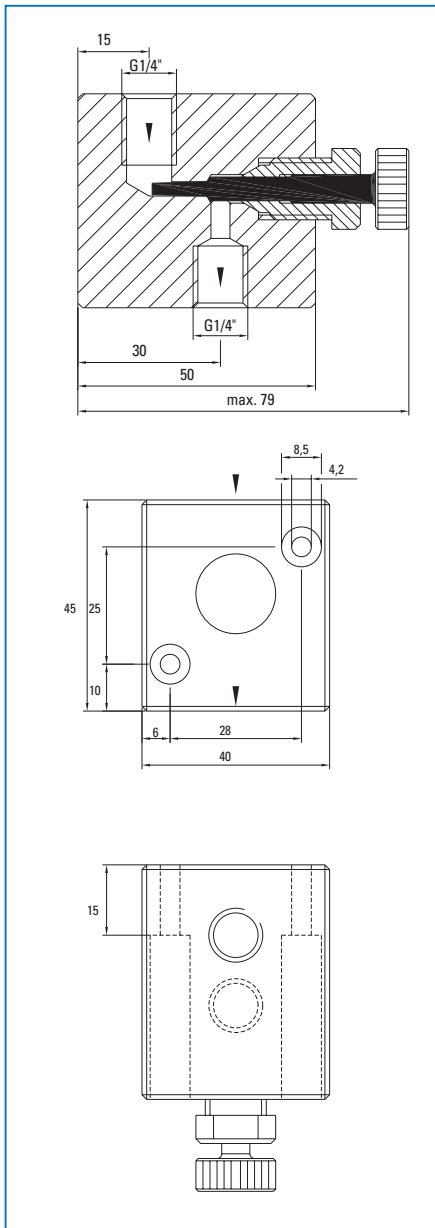
Special features of the **M&C RV 11-..** needle valves are compact design, exact adjusting characteristics with locking function, valve bodies made of various materials as well as the attachment facility integrated in the valve body for simple assembly with hoses systems.

Gas inlet and outlet are configured vertically in respect of the valve needle. The gas inlet is located at the top of the valve needle. The valve needle is reliably sealed and fixed without O-rings in the valve body with the packing pressure screw which is made in one or two parts, depending on the material. Approx. 2 1/2 turns of the needle activate the locking function. The through-flow adjustment is effected with an additional 3 1/2 turns. The valve needle has no stop and should be actuated only corresponding to the adjustment characteristics.

Assembly in situ allows a flexible adjustment to local conditions thanks to corresponding positioning of the connections. Tube connectors can be optionally supplied.

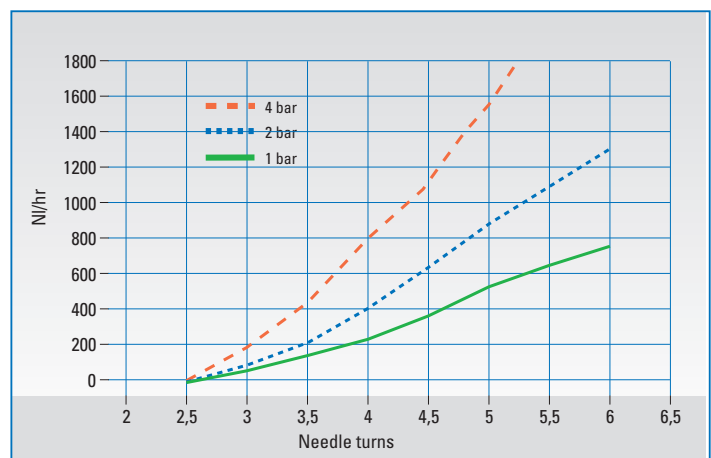
## Dimensions

### Needle valve RV 11- ..



Dimensions in mm

### Through-flow in NI/h of air and valve spindle turns at 4. 2 and 1 bar upstream pressure.



## Technical Data

Needle valve	RV 11-P	RV 11-T	RV 11-PK
Part No.	02V1000	02V1200	02V1300
Type of design	straight-way type		
Type of mounting	wall mounting		
Connections	G 1/4"i, DIN ISO 228/1		
Dead volume	2 ml		
Pressure, max.	4 bar		
Sample temperature, max.	80°C	100°C	150°C
Ambient temperature, max.	80°C	100°C	150°C
Material of sample conducting parts			
body	PVDF	PTFE	PEEK
valve needle	PVDF	PCTFE	PEEK
packing pressure screw	PTFE	PTFE	PTFE / PEEK
Weight	150 g	190 g	150 g