

SR25.1

Peristaltic Pump Series SR25[®]

Version SR25.1, SR25.1-G, SR25.1/Ex

- Save continuous condensate removal
- With return stop
- Self-suctioning
- Slow speed
- Hose with long service life
- Explosion proof version according to ATEX for zone 1

Application

The peristaltic pump **SR25.1** has been specially developed for the condensate removal in analysis applications. It ensures a continuous condensate discharge in gas coolers, condensate collecting vessels, etc. A synchronous motor and the gearing unit with return stop make a condensate flow back impossible. The capacity of 0,3 l/hr guarantees a safe condensate removal, for example when cooling 850 l/hr sample gas with an initial dew point of +70 °C.

Description

The peristaltic pump **SR25.1** is self-suctioning and **designed for continuous operation**. It consists of 3 compact parts:

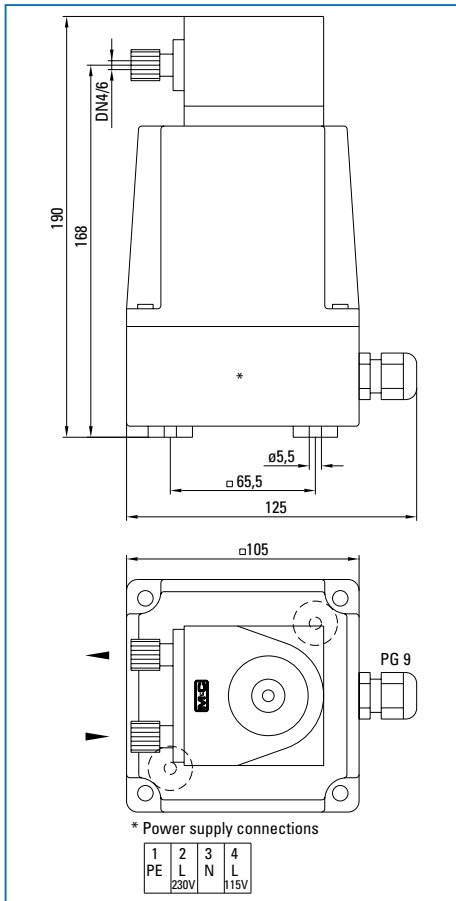
- synchronous motor
- gearing unit with return stop
- pump

The slow speed (5 rpm), the two PVDF hose contact pulleys and the novoprene hose guarantee a good mechanical and chemical resistance with a long service life. A possible change of hoses is simplified by using specially designed hose sets. The tube connectors DN 4/6 allow as well the application of PTFE tube.

- The peristaltic pump **SR25.1...** is supplied with electric mains for 230V/50Hz and 115V/60Hz.
- The peristaltic pump **SR25.1...** is designed as a mounting version.
- Up to 4 peristaltic pumps **SR25.1** can be installed in the compressor gas cooler type **EC** and in the universal unit **EC-FD** or **EC-D** (see data sheet 3-4.1 and 3-4.4).
- The peristaltic pump **SR25.1-G** is supplied in a wall mounting case.
- The peristaltic pump **SR25.1/Ex** is a mounting version for use in hazardous area zone 1.

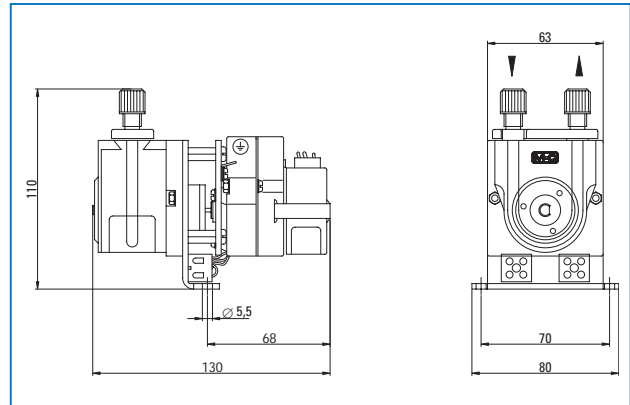
Dimensions

Peristaltic pump SR25.1-G in wall-mounting housing



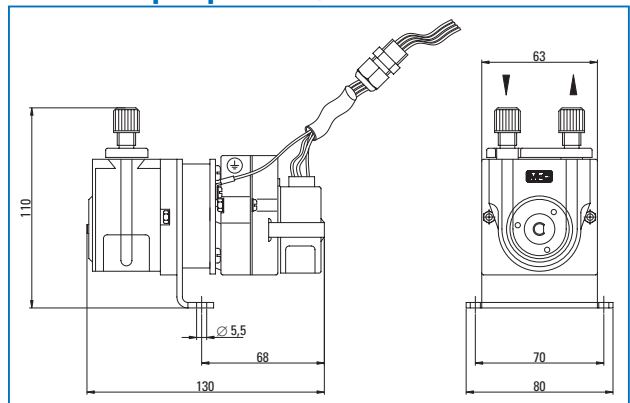
Dimensions in mm

Peristaltic pump SR25.1



Dimensions in mm

Peristaltic pump SR25.1/Ex



Dimensions in mm

Technical Data

Peristaltic pump Series SR25®	version SR25.1	version SR25.1-G	version SR25.1/Ex
Part number	01 P 1000	01 P 1100	01 P 1201
Housing	no	yes, out of PVC	no
Method of mounting	boxed type	wall mounting	boxed type
Protection / electrical standard	IP 10 EN60529	IP 52 EN60529	IP40, Ex II 2 G EEx m II T5 certificate no. KEMA 03ATEX2218 X
Electrical connection	terminal 1,5 mm ²	terminal 1,5 mm ² 1x PG9	600 mm cable 4 x 0,5mm ² * with screwed cable gland M12 x 1,5
Dimensions (mm)	130x110x80	105x125x190	130x110x80
Weight (kg)	0,6	0,9	0,7
Peristaltic pump speed	5 rpm standard		
Capacity	0,3 l/h standard		
Suction max.	200 mbar abs.		
Pressure max.	2200 mbar abs.		
Sample temperature	0 °C - +60 °C		
Ambient temperature	0 °C - +50 °C		+5 °C - +50 °C
Storage temperature	-10 °C - +60°C		
Connections	Tube connections DN 4/6 mm		
Material of sample contacting parts	PVDF, Novoprene		
Power supply / consumption	115/230V 50/60Hz, 3,5VA		
Continuous duty	100 % ED		
*Option Ex-connecting box for SR25.1/Ex	Version for one peristaltic pump	Version for 4 peristaltic pumps	
Part number	01P9400	01P9405	
Electrical connections / cable gland	terminals max. 4 x 2,5 mm ² / 1 x M20x1,5, 1xM12x1,5	terminals max. 16 x 2,5 mm ² / 1 x M20x1,5, 4 x M12x1,5	
Protection / electrical standard	IP65, Ex II 2 G EEx e II T5		
Dimensions (mm) / Weight (kg)	75 x 80 x 55 / 0,35		160 x 75 x 55 / 0,6