

TG10

## Condensate vessel

### TG1, TG1/LA1, TG10, TK10, TK11, TK12/LA5, TK13

- **Very corrosion resistant**
- **Liquid level always visible**
- **Different tube connections possible**
- **Level alarm possible**
- **With integrated outlet cock**

### Application

The condensate collection vessels **TG.. / TK..** are specially designed for application in the analysis technique and are used as condensate collectors in applications where automatic condensate removal is impossible, as e.g. for gas coolers, or where undesired small amounts of condensate occur.

When using peristaltic pumps as automatic condensate removal and expecting a high quantity of liquid carry over, the condensate collection vessel can also be used as a buffer vessel.

For safe operation, the condensate vessels can be equipped with a liquid-level alarm.

### Description

The **M&C** condensate collection vessels **TG1** and **TG10** are made of industrial quality glass. This allows high resistance against corrosion as well as the ability to see inside the vessel. A **GL25**-12 mm clamp connector is provided for condensate inlet and in the case of the **TG1** design also for an optional liquid alarm sensor (not in **TG10**) which is supplied sealed with a blank cover.

The outlet valve is fitted with a PTFE stopcock, ensuring easy access and hermetic sealing. All sample contacting parts are out of glass and PTFE. A wall mounting plate is supplied as part of standard delivery. The **TG1/LA 1** design is supplied completely with a liquid sensor **LA1** for conducting media and includes electronic **LA 1.1** in a wall mounting housing. Special connector adapters for the connection of tubes to GL glass connections can be supplied optionally.

The **M&C** condensate vessels **TK10-TK12/LA5** are made of PVC transparent. This allows high resistance against corrosion as well as the ability to see inside the vessel. Version **TK12/LA5** has got a G3/8" connection for the condensate inlet. For additional junctions, the condensate vessel **TK10** has got two extra G1/4" connections which are sealed with a blank cover.

The condensate collection vessels **TK11** and **TK12/LA5** have got a connection thread **M28** for the level switch **LA5**. The condensate vessel **TK12/LA5** is completed with an integrated level switch **LA5** and 1m connection cable LIYY 2x 0,14 mm<sup>2</sup>. The hand drain valve from the **TK10-TK12/LA5** is sealed with an FPM o-ring, this provides an easy handling and guarantees a proper sealing. Three additional G1/4" threads provide the possibility for easy vertical or horizontal connection. The horizontal connections are sealed with blank cover. The wall mounting carriers are included.

The 10 litre **M&C** condensate collection vessel **TK13** and **TK13/LA5** with handle and stopcock are made of PE. For condensate inlet and ventilation there are three tube connections DN4/6 mm on the **TK13** and **TK13/LA5**.

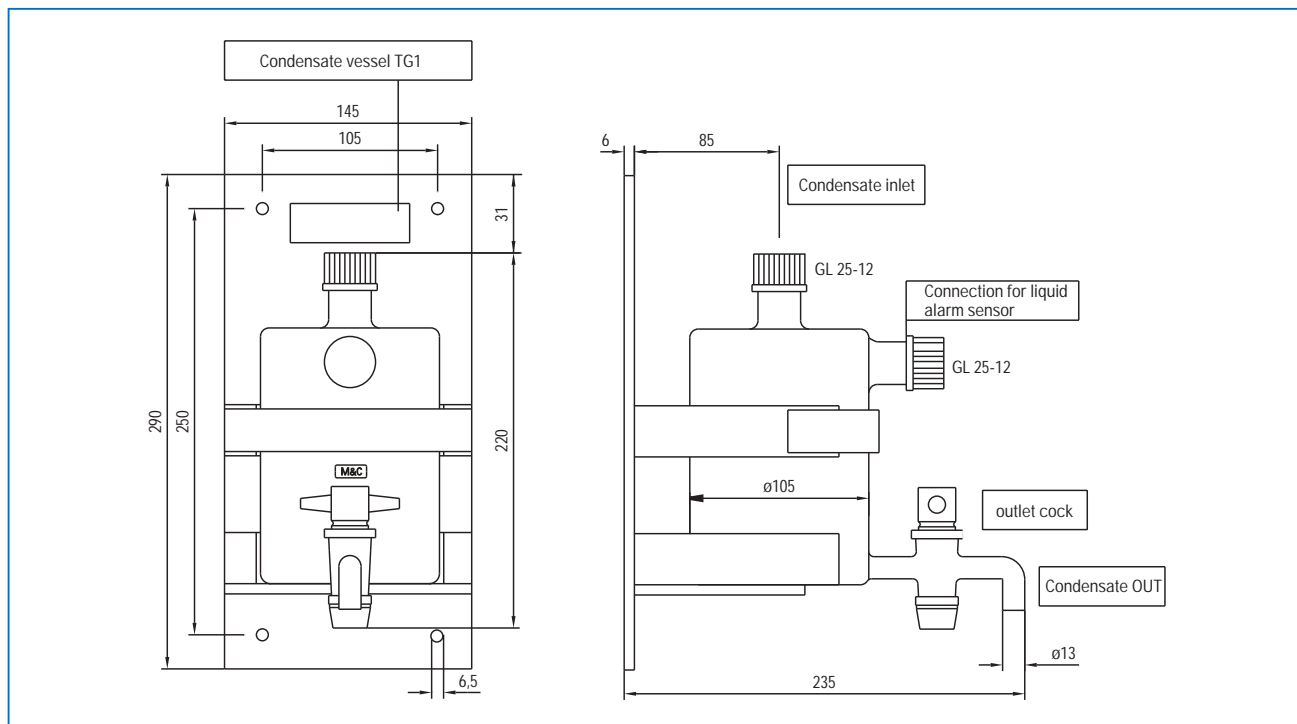
The condensate collection vessel **TK13/LA5** is complied with an integrated level switch **LA5** and 1m connection cable LIYY 2x 0,14 mm<sup>2</sup>.

The level switch **LA5** is supplied from the factory as a normal open contact. If you need a normal close contact, turn the float 180°.

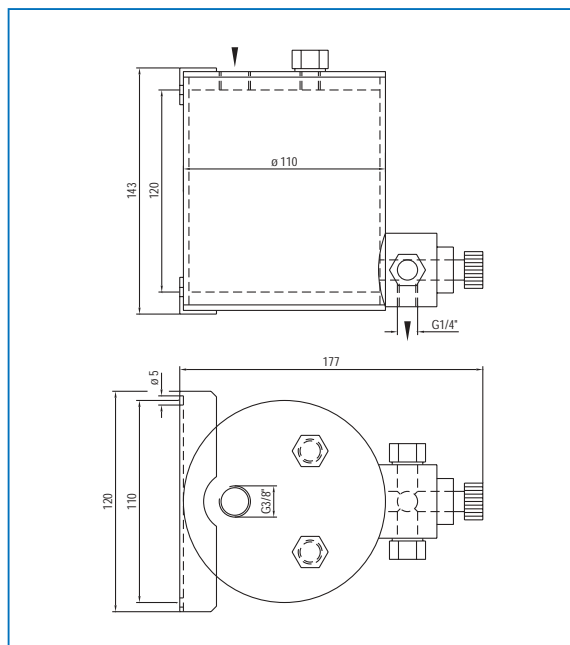
- *Special tube and pipe connections are available as option.* –
- *Other vessel contents or materials are available.* –

Dimensions

Condensate vessel TG1

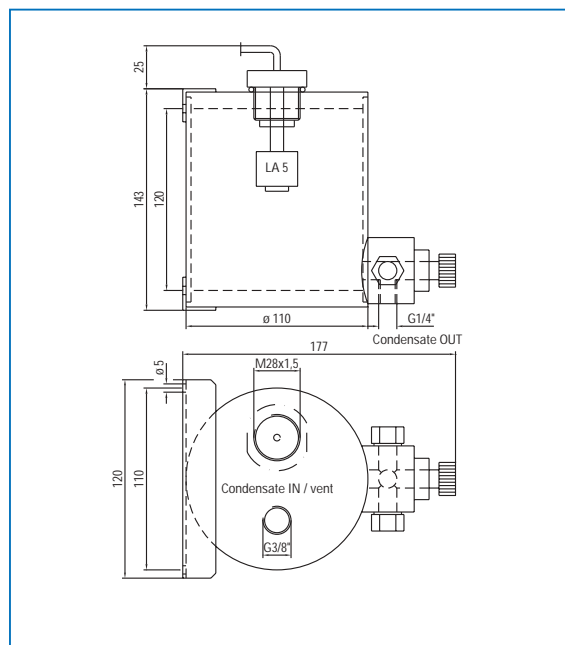


Condensate vessel TK10



Dimensions in mm

Condensate vessel TK11, TK12/LA5



## Technical Data

Condensate vessel	TG 1	TG 1/LA 1	TG 10
Part number	09K4000	09K4100	09K4050
Contents	approx. 1 litre		
Operating pressure at 20 °C	0,2 to 2 bar abs.		
Sample temperature	0 to +80 °C		
Ambient temperature	0 to +55 °C		
Storage temperature	-15 to +65 °C		
Material of sample contacting parts	glass, PTFE		
Dimensions	145x290x235 mm / w x h x d		
Connections	1x GL25-12, 1x GL25, 1x 13 mm nipple	2x GL25-12, 1x 13 mm nipple	1x GL25-12, 1x 13 mm nipple
Weight	1 kg	2 kg	1 kg
With liquid alarm unit	NO (option)	YES	NO
Power supply	230V 50Hz 2VA		

Condensate vessel	TK 10	TK 11	TK 12/LA5	TK13	TK13/LA5
Part number	09K4250	09K4200	09K4300	09K4310	09K4320
Contents approx.	1 litre	1 litre	1 litre	10 litre	
Operating pressure at 20 °C	0,2 to 2 bar abs.	0,2 to 2 bar abs.	0,2 to 2 bar abs.	atmospheric	
Sample temperature	0 to +50 °C				
Ambient temperature	0 to +55 °C				
Storage temperature	-15 to +65 °C				
Connection condensate IN	1x G3/8" i, x G1/4" i	1x G3/8" i, 1x M 28 x1,5 i	1x G3/8" i, 1x M 28 x1,5 i	3x DN4/6	2x DN4/6
Connection condensate OUT	3x G1/4" i	3x G1/4" i	3x G1/4" i	stopcock ø11,5	
Dimensions	see drawing	see drawing	see drawing	235x310 mm ø x h	
Weight	0,5 kg	0,5 kg	0,6 kg	1 kg	
Sample contacting parts	PVC, FPM	PVC, FPM	PVC, FPM	PE, rubber, PVDF	
With liquid level alarm	NO	NO (option)	YES	NO	YES
Contact rating			48V 0,5A 10W		48V 0,5A 10W